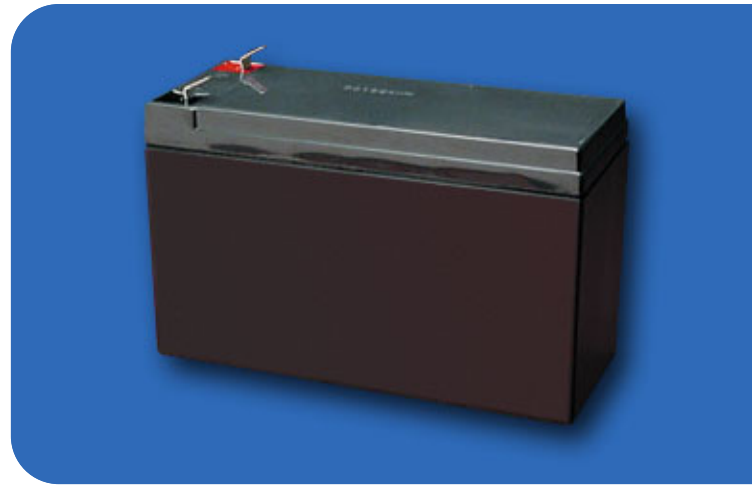


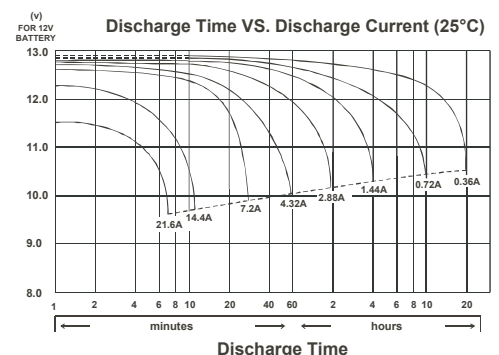
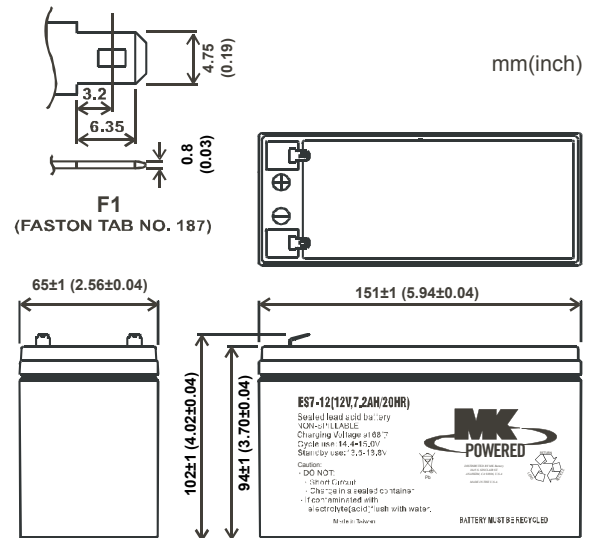
SPECIFICATIONS

Nominal Voltage (V)	12V
Nominal Capacity	
20hour rate (0.36A to 10.50V)	7.2Ah
10hour rate (0.72A to 10.50V)	7.2Ah
5hour rate (1.22A to 10.20V)	6.12Ah
1C (7.2A to 9.60V)	3.24Ah
3C (21.6A to 9.60V)	2.59Ah
Weight	5.91 Lbs. (2.678 kg)
Internal Resistance (at 1KHz)	19 mΩ
Maximum Discharge Current for 30 seconds :	144A
Maximum Discharge Current for 5 seconds :	288A
Operating Temperature Range	
Charge	0°C(32°F) to 40°C (104°F)
Discharge	-15°C(5°F) to 50°C (122°F)
Storage	-15°C(5°F) to 40°C (104°F)
Charge Retention (shelf life) at 20°C (68°F)	
1 month	92%
3 month	90%
6 month	80%
Charging Methods at 25°C (77°F)	
Cycle use :	Charging Voltage 14.4 to 15.0V Maximum Charging Current 2.16A
Standby use :	Float Charging Voltage 13.50 to 13.80V No current limit required
Life expectancy :	
Cycle Use :	100% depth of discharge 250 cycles 80% depth of discharge 350 cycles 50% depth of discharge 550 cycles
Standby Use :	3~5 years
Case Material	ABS (94-HB & 94V-0 flame retardant case)
Terminal	F1

Maintenance-Free Rechargeable Sealed Lead-Acid Battery



DIMENSIONS



Vertriebspartner:



EMG Elektromobile GmbH & Co. KG

Düningshof 53-57 · 33729 Bielefeld · Germany

Phone: +49 (0) 521/260 380 · Fax: +49 (0) 521/260 38 20 · E-Mail: info@emg-elektromobile.com

EMG liefert u.a. Qualitätsprodukte von:

